

Clear, consistent shipping documentation.

# aSa<sup>®</sup> Delivery Ticket

Your customers will appreciate the professional-quality bills of lading. Your drivers will appreciate the clear delivery instructions. You'll appreciate the fact that it all came from a single, easy-to-use application.

- **Stop hand-writing bills of lading**  
aSa's easy-to-use Delivery Ticket tool lets you create professional-quality shipping documentation faster than you can scribble an address.
- **Take control of your shipping process**  
A delivery ticket is an essential control document for your shipments. Not only does it serve as a definitive list of material being provided, it also provides a trigger for invoicing.
- **No more scrambling for information**  
Just about everything you need to create a delivery ticket — customer, job, address, bar list, and material information — is already in your aSa database. On-screen navigator lists make it easy to find and select bar lists.

aSa Delivery Ticket allows you to create a professional-quality document for each shipment of material that you deliver. Regardless of whether you use the term "bill of lading," "shipping ticket," or "manifest," the end product is the same — a clear listing of *what* is being shipped, *where* it goes, and *who* gets it. aSa gives you the tools to pull all of this information together with minimal effort. Delivery Ticket is a basic version of the Bill of Lading screen in aSa Rebar Financials. We designed it for companies that require an integrated shipping documentation system, but do not need the full functionality of our entire Rebar Financials suite.

## Integration and Intelligence

aSa Delivery Ticket is so easy to use because almost every piece of data you need to create the shipping document is already in your aSa database. For example, when you select a job, the system automatically loads the customer and the jobsite address, eliminating the need for you to type this information. (Although, you can always modify address information on the fly for a particular shipment if required.) When you add bar lists to the shipment, the selection list is filtered based on the current job. After a delivery ticket is printed, detailers using CAD/Detailing or Bar List can see the Shipped status of items.

Like all aSa applications, Delivery Ticket is built to handle the unique needs of the rebar industry. For example, when you add on-the-fly bar list items to your shipment, the program automatically calculates weight in pounds or kilograms based on bar size, length, and number of pieces. Mesh and miscellaneous item quantities can be entered in any unit of measure that you use, including pieces, liner feet, sheets, and rolls.



- **Customize your delivery tickets**

Add terms, jobsite directions, even a signature line to verify delivery. Include any message that your drivers or customers need. Save and re-use your notes so you never have to re-type them.

- **Give your drivers everything they need**

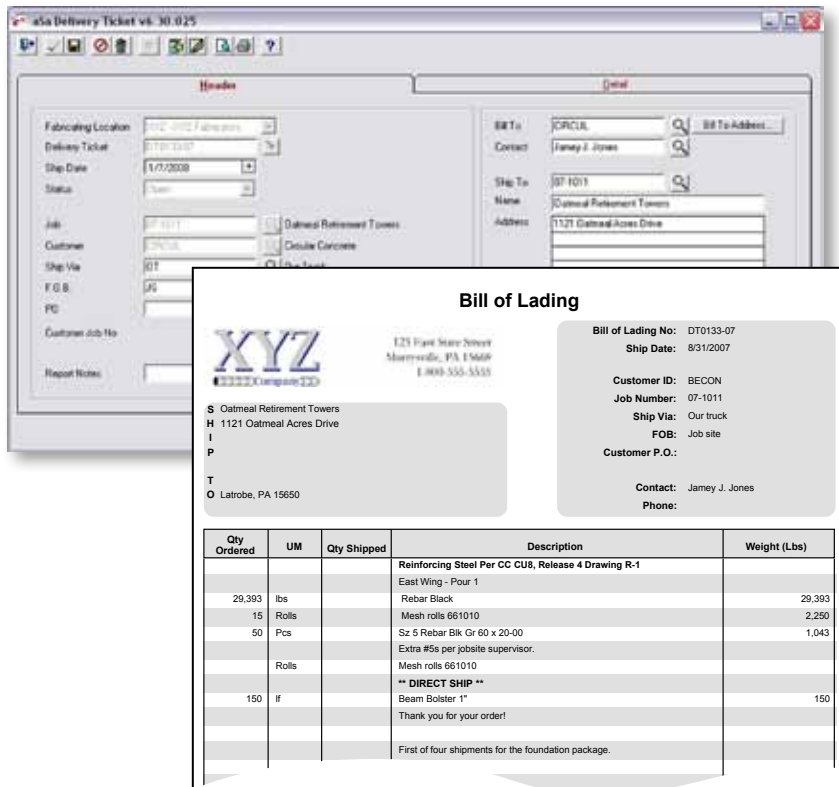
Jobsite directions, delivery instructions, and a clear manifest of material help ensure your entire order gets to its destination.

- **Automatically track delivery status**

You won't need a paper trail to see whether a release has shipped or not. Bar list status is automatically updated to Shipped based on Delivery Ticket activity.

- **Forget cumbersome calculations**

Adding an item to your delivery is as simple as selecting the item and typing the quantity. The program develops all totals for you, automatically converting between units of measure whenever necessary.



*Because Delivery Ticket is completely integrated with other aSa modules, the information you need to create professional-quality shipping documentation is right at your fingertips. Select the job and shipping details on the Header tab, then add bar lists and on-the-fly material on the Details tab. Click Print and you're ready to deliver.*

## Comprehensive Yet Simple

Each delivery ticket is organized into three main sections. The header includes customer, job, address, delivery method, and FOB information. The body of the document is a list of material, which may include:

- Bar lists created in aSa Bar List or taken off from CAD/Detailing drawings.
- Individual rebar and miscellaneous items added on the fly.
- Comment lines and item notes.

The bottom of the document includes a total weight for the shipment, special instructions, terms, and driver directions. All comment-type items can be saved and re-used on future delivery tickets.

## Customizable

Options allow you to customize your printed delivery ticket. For example, you can add your company logo to the header. You can also display or hide various pieces of information. This is helpful, for example, if you want to print two customized copies of the delivery ticket: one for the driver and one for the customer. System-level options allow you to update delivery status automatically when the delivery ticket is printed or by using an easy on-screen check list. The Delivery Ticket Register gives you an up-to-date list of your shipments. Options allow you to sort and filter the report based on your needs.

**Applied Systems Associates, Inc.**  
www.asarebar.com

5270 Logan Ferry Road  
Murrysville, PA 15668 USA  
1.800.CALL.ASA 1.800.225.5272  
+ 1.724.733.8700

**aSa Australia**  
+ 61.7.3018.7564

**aSa Europe**  
+ 44.1443.231278

**aSa Latin America**  
+ 1.787.533.8484

**aSa Middle East**  
+ 971.4.3756980